



SOUTH COAST
BAPTIST COLLEGE

OUR MISSION

Shaping rigorous minds
and compassionate hearts

OUR VALUES

Wisdom, Grit,
Love and Hope

OUR VISION

SCBC is a thriving Christian community
that inspires learning as a means of
transforming and empowering lives

4.1.11 Uniform Policy (Secondary)

The College uniform helps students identify with their school and develop a sense of belonging. Wearing the uniform to a high standard encourages a sense of pride in appearance which positively impacts student behavior and their application in the classroom. Our immediate and wider community will largely form a perception of the College based on their observation of students in transit to and from the College.

The College requires that the full uniform be worn and that parents support the College in this matter. Breaches to the Uniform Policy may result in consequences as outlined on the College Discipline Policy.

Parents are to ensure that their children leave home neatly dressed and groomed in the College uniform including the requirements for makeup and hair.

Girls Uniform

Summer Uniform
Summer dress (the hem must sit on the knee)
College ankle socks
Black leather lace-up shoes (see description)
College jumper to be worn completely not tied around the waist
College hat (Compulsory)



Winter Uniform
Winter skirt (the hem must sit on the knee)
Blue winter blouse (with logo)
College Jumper
Black tights (min 70 denier- available from the uniform shop)
Black leather lace-up shoes (see description)
College blazer (compulsory) to be worn to and from school
College jumper (Optional)



Boys Uniform

Summer Uniform
Grey College shorts (no longer than the top of the knee) and they must cover undergarments
Short sleeve blue College shirt (with logo)
Grey College ankle socks
Black leather lace-up shoes (see description)
College hat (Compulsory)
College jumper to be worn completely not tied around the waist
Black leather lace-up shoes



Winter Uniform
Long grey College pants (all undergarments must be covered)
Black belt with a simple buckle
Short sleeve blue College shirt (with logo)
College tie
Grey College ankle socks
Black leather lace-up shoes (see description)
College blazer (Compulsory) to be worn to and from school
College Jumper (Optional)



School Shoes

Black, lace-up, polished leather school shoes are compulsory for students at the College. Shoes must be 'heeled' but with heels not higher than 20mm, measured from the inside of the heel.

Unacceptable shoes styles include:

- Brougues – i.e. Shoes that have a punched pattern.
- Non lace up dress shoes.
- Chunky type shoes.
- Shoes with coloured stitching or coloured shoelaces.
- Black sports type leather shoes.
- Black canvas shoes.
- Black Vans shoes.

Orthotics

Clarks 'Detroit' are an acceptable shoe and are designed for orthotics. Boots are not acceptable.



Example of an acceptable shoe

General Uniform Expectations

1. Boys' shirts should be tucked in fully. Girls shirts are tailored and therefore to be worn on the outside of their winter skirts.
2. Boys' tie should be neatly tied and pulled up so that it covers the top button. The bottom of the tie should be the appropriate length, i.e. near to the belt.
3. Shoes should be clean and polished. And black shoelaces tied firmly in a bow.
4. Boys' shorts and trousers should be worn neatly with a belt above the hip and the hem of shorts above the knee. Undergarments are not to be on show.
5. College blazer to be worn to and from school, and when leaving the school grounds during terms 2 and 3 (optional if wearing summer uniform during the 1-week changeover period at the start of Terms 2 & 4). (Staff will use their discretion to notify students during the day if there is an unusually hot day during Terms 2 and 3)
6. Students are to wear the College blazer if cold **before** putting on the jumper (i.e. the jumper is worn only if cold enough to require a second lining).
7. I feel this should be removed. Why force kids to take their blazer to class? It's one extra thing to carry, if the weather is cold they will wear it but shouldn't have to if it's hot.

8. The College blazer can be worn as an option at recess and lunch Point 5 applies (optional if wearing summer uniform during the 1-week changeover period at the start of terms 2 & 4).
9. Girls have the option to wear the College pants at school instead of the College summer dress or winter skirt. Girls are expected to wear the College summer dress or winter skirt when representing the College.

Physical Education and Sport

Students in the Football Academy are expected to wear the College sports uniform at all non-football sporting events and around the College when they cannot be in their formal uniform.

the house shirts are coming – when?
College Sport shorts
White College Sport ankle socks
College broad brimmed bucket hat or cap in Terms 1 and 4
Sports cross trainer shoes that provide ankle support and allows for rapid changes in movement
College tracksuit pants and jacket (winter) Non-College sports jackets are not permitted



Sport Bag

All students are required to have the blue College Sports Bag. Non-College Sports bag are not acceptable.

Physical Education Shoe Requirements

Proper sports sneakers / trainers that provide ankle support and allows for rapid changes in movement are required. Vans/skate or canvas shoes are **not** permitted. Any colour is acceptable.

Sport Specific Uniforms

As per instruction from the Head of Learning Area HPE, Director of Sport and Director of Football, students in sporting teams are required to wear correct team attire. Sporting uniforms must not be matched with the college summer or winter uniforms.

Healthy Practices and Sun protection: a water bottle, sun screen, sunglasses, mouth guard and other protective equipment are recommended. For health reasons, students should refrain from sharing a water bottle.

Please note: Students must wear the correct formal uniform to the College, not their Physical Education uniform. Exceptions to this include students training before school or students competing in Interschool

or Inter-house carnivals. Student who have Physical Education at the end of the day may wear their PE uniform home if they have all the correct items and are wearing it correctly otherwise, they will need to change back into their formal uniform.

Swimming: Students competing in intrahouse and interschool swimming carnivals must wear the approved College bathers which can be purchased from the Uniform Shop. Other bathers, including board shorts are not permitted.

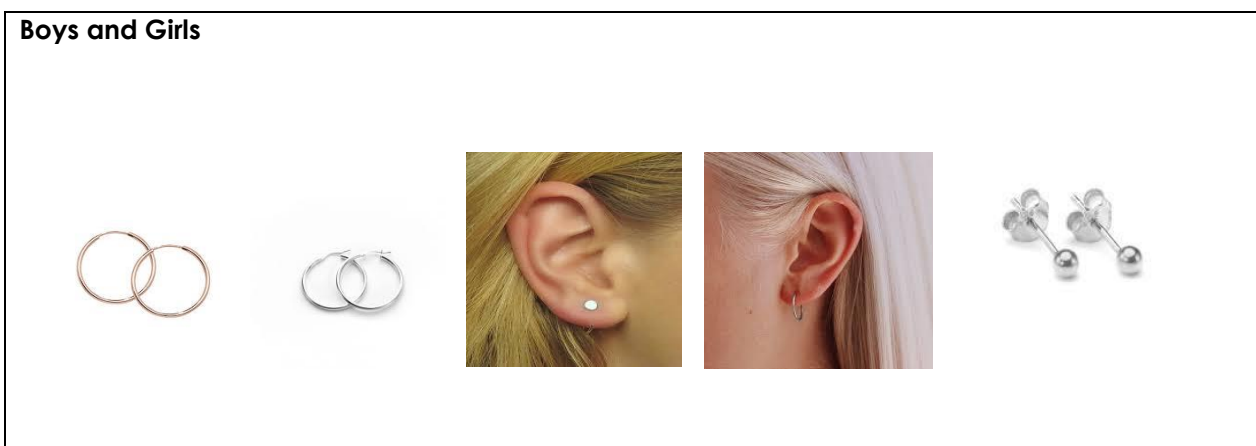
Jewellery

The only jewellery that students can wear is:

- Girls-one pair of plain sleeper earrings with a diameter no bigger than 8 mm (your little finger should not fit through the earring) or plain stud earrings no bigger than 3 mm or stud earrings with a stone no bigger than 3mm in the lower lobe of the ear.
- Girls with nose rings, earrings in the upper ear or on the part of the ear known as the 'Tragus' will be asked to wear a clear plastic stud so that it cannot be seen. Leniency will not be given for students who elect to have extra ear piercings during holiday periods. A clear stud must be worn, and healing time is not an acceptable excuse for non-compliance.
- Boys-one plain earring/s or an earring/s with a stone no bigger than 3mm.
- A watch or exercise tracker.
- Smart watches are **NOT permitted** at school under any circumstances and their use as an exercise tracker is not an acceptable reason for being given permission to wear one at school.
- A medic alert bracelet or necklace.
- Rings bracelets/bangles/charity wrist bands are **NOT permitted** to be worn.

Students found wearing jewellery such as rings and bracelets (non-medical) will be asked to remove them, and they will be held accountable for the choice they have made. Students who choose to wear other jewellery risk its confiscation with the item being returned to the student at the end of the week. At times, it may be necessary to confiscate items of jewellery. Although all care will be taken with these items, the College accepts no liability for confiscated items.

Acceptable Earrings



Clear Studs



Hair

- Hair is to be clean and neatly groomed whenever in school uniform.
- Fashionable extremes (some examples are, but are not limited to, Mohawk, dreadlocks, rat tails, top knot, shaved heads, multiple or unsuitable colours, and any others as determined by the College), are not permitted.
- Hair is either short or tied back – all hair that can be tied back must be tied back, including hair that falls below the collar using the College navy hair tie and/or scrunchies. Black or navy plain hair slides and knitted black fabric headbands only.
- Fringes longer than the eyebrows must always be clipped back.
- Hair that cannot be tied back must be held securely in place with clips and not fall in front of the face at any time.
- Only natural looking tints may be used, stark contrasting colours such as balayage, as well as block colours or wide sections of colours, are unacceptable, as are brightly coloured tints.
- Braids/small plaits are acceptable provided that:
 - They fit the head firmly and neatly and are tied back into a ponytail which is secured at the nape of the neck (not on the top of, or back of the head)
 - They are kept neat, clean and well groomed
 - No beads or coloured bands are used
 - There are no dreadlocks
 - Hair is culturally relevant (bad wording, but something to that effect e.g. an African can wear dreadlocks)

In matters of hairstyle, the College remains the final arbiter.

Grooming

- All boys in Years 7 – 12 are to be clean shaven during the school day and at all College events.

Make-up and Nails

- Girls can wear CC cream or BB cream to cover blemishes on the face but are not permitted to wear mascara, foundation, eyeliner, eye shadow or coloured lip moisturisers. Girls in Year 12 are permitted to wear make-up that looks semi-professional and acceptable for the workplace. Girls in Years 7 – 11 will be asked to remove make-up that is noticeable.
- Nail polish/varnish, French manicure and artificial/acrylic nails are not permitted to be worn at school.
- Girls are required to attend school without artificial beauty treatments and enhancements such as unnatural looking eye-lash extensions.

Tattoos

Visible tattoos are **NOT permitted**. Students with a tattoo must always have it covered.

Scarves

Only College scarves purchased from the Uniform Shop are to be worn in Terms 2 and 3. No other scarves can be worn.

Hats

Students are required to wear their school hat when outdoors at school in Terms 1 & 4. The hat is to be worn when participating in outdoors activities and is compulsory for all sport classes. **No other hat or cap is permitted to be worn.**

In Terms 1 and 4, students sitting outside or playing on the oval during recess and lunch breaks must wear a hat.

Uniform Change over Dates

Term 1 Summer Uniform

Term 2 Winter Uniform (Wk 1 summer or winter uniform is permissible)

Term 3 Winter Uniform

Term 4 Summer Uniform (Wk 1 summer or winter uniform is permissible)

Dress for Charity Days/Free Dress Days

Any free dress days to support various charities will be chosen by the Prefects/Student Council. There will be a maximum of one free dress day per term. Correct PE attire is required to be worn for Physical Education lessons, and appropriate footwear is required for practical areas such as Foods Technology and Wood/Metal classes. Any clothing with graphics and/or words that are contrary to the Christian ethos of the College **must NOT** be worn. Students who do not conform to these standards will be withdrawn from classes.

Social Functions (e.g. Year 12 Ball, River Cruise)

Dress standards are expected to reflect College values. The College reserves the right to exclude students from a function if their attire is considered inappropriate by a Head of Year, Deputy Head of Secondary (Wellbeing or Curriculum) or Head of Secondary.

Excursion/Incursions

Students are required to wear the appropriate College uniform when attending excursions/incursion. The organising teacher will advise parents and students of the uniform requirements as part of the planning/permission process.

Students who do not have the correct uniform may be given the opportunity to rectify this (where possible) prior to leaving on the excursion. Alternatively, students may be required to remain at school.

Consequences

Students who wear the incorrect uniform will face the consequences as outlined in the College Discipline Policy. This includes the allocation of steps, levels or the removal from classes and in-school suspension for constant non-compliance.

Policy Reviewed: 01/04/2022

Next Review Date: Term 1, 2024